

- Viewgate -



**IPV-100 Network
Recorder
Ver 1.2.2a**

Instruction Manual

www.viewgatedvr.com

1-866-843-6865 (Phone)

1-866-331-3341 (Fax)



Introduction

IP View Network Recorder is the software that enables users to monitor and record the images of Network Cameras and IP View -100 (IPV-100) at up to 16 different locations simultaneously. The IP View Network Recorder also allows its users the ability to control networked, Pan/Tilt/Zoom (PTZ) cameras from any computer which has the IP View Network Recorder software installed on it. In addition, a digital In/Out function is available with the optional, digital In/Out module available.

- Simultaneous Multi-Channel Monitoring (1/4/9/16 Channel)
- Sequential and Full Screen Monitoring
- Snap Shot for a still image and Recording
- Playback with the IP View Network Recorder player
- Image Attributes Adjustment
- Pan/Tilt/Zoom Control
- Digital In/Out Control

2

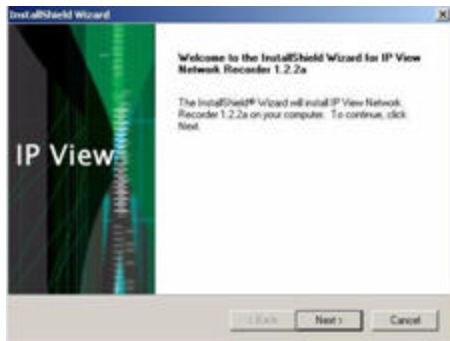
Installation



1

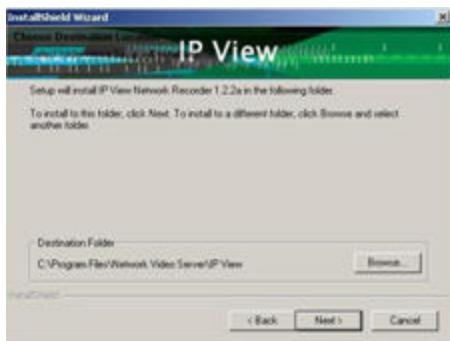
Execute the [IP View Network Recorder 1.2.2a setup] file to install the program.

Select your language and click [OK] button.



2

Click [Next >] button.

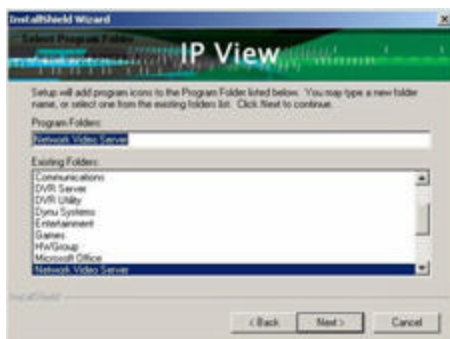


3

Assign the directory to be installed.

To change the directory, click [Browse...] button.

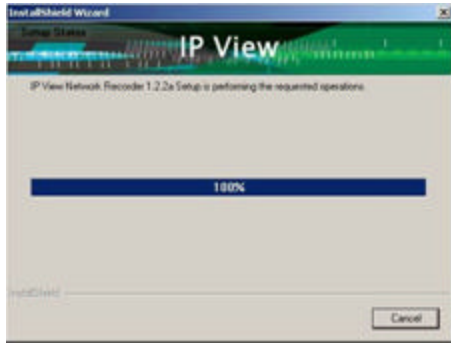
Click [Next >] button.



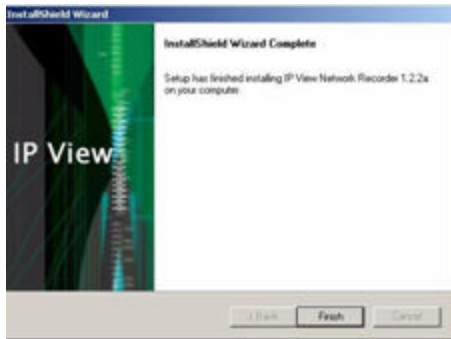
4

Assign the program folder to be installed.

Click [Next >] button.



Wait until the process finishes.
To cancel it, click [Cancel] button.



Click [Finish] button.
Go to [Start] → [Program] → [Network Video Server]
to locate [IP View Network Recorder] folder.

Overview



1 Display Window

0 Function Tab & Button

- Display Window Shows images from IPV-100 or network camera.
- Channel-Selection Buttons Enables user to select the channel to control.
- Monitoring-Option Buttons Simultaneous Multi-Channel (1/4/9/16 channel), Sequential and Full Screen Monitoring.
- P/T Control Panel Pan/Tilt Control. (Pan/Tilt and Zoom functions are available on networked PTZ cameras with this button enabled)
- Status Window Shows Date & Time, Free HDD Space and Digital Input Status.
- Function Tab & Button IPV-100 or Network Camera Connection, Setup, Record, Zoom Control, Image Attributes Controls.

Setup

Password

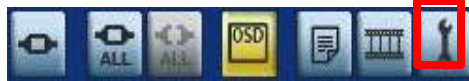
IP View Network Recorder asks the password for the administration authority.



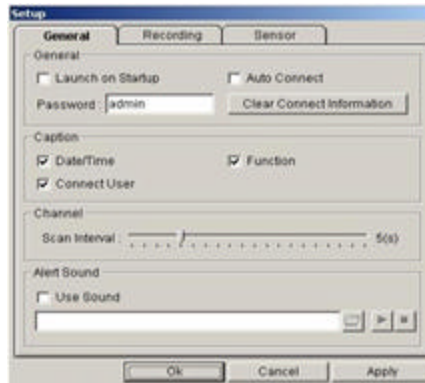
① The default password is 'admin'.

Setup

Click this button to set up the program.

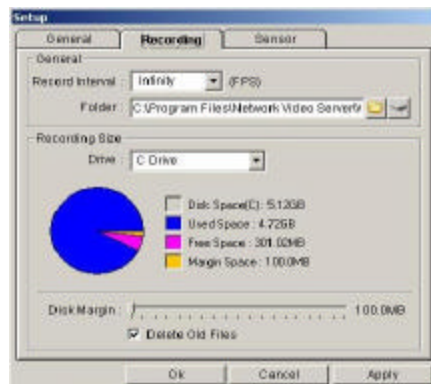


Setup-General



- | | |
|-----------------------------|---|
| ● Launch on Startup | Runs automatically as soon as Windows starts. |
| ● Auto Connect | Connects to IPV-100 or network camera automatically as soon as it starts. |
| ● Language | Language selection. |
| ● Detect Language | Detects the language version of Windows. |
| ● Password | Password setup |
| ● Clear Connect Information | Deletes all the previous connection information. |
| ● Caption | Selects the items to be displayed on OSD. |
| ● Scan Interval | Specifies the amount of time it shows images in the Sequential Monitoring Mode (1 ~ 20 sec) |

❑ Setup-Recording

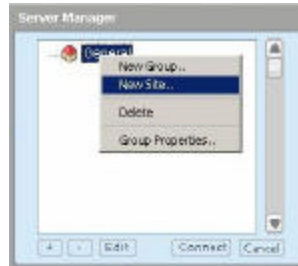


- Record Interval Frame rate to record. [FPS: Frame(s) per Second]
- Folder Specifies the directory to record data.
- Recording Size Shows HDD Status.
- Disk Margin Specifies the HDD space not to record. (100MB~1GB)
- Delete Old Files Overwriting Option. Lets a user decide whether to overwrite the old files or not when the HDD is full.

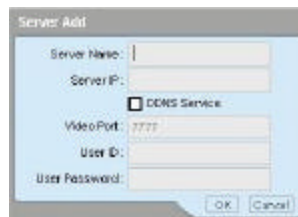
IPV-100 / Network Camera Registration

☐ Registration

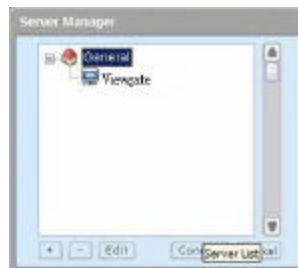
Click the [Connect] button in the [General] tab.



- Adds & Deletes IPV-100 or network camera connection information. Group Configuration Available.
- Select [General] group and click the right button of your mouse for the menu. And click [New Site] menu.



- Input Server or Camera Name, Server IP address, Video Port, User ID, User Password.
- User ID & Password must be the ID & Password of your IPV-100 or network camera.
- Alphanumeric character can be used as Server Name. But Server Name must start with alphabet character.
- For DDNS users
 - ✓ Server IP DDNS Server IP
 - ✓ Check the box next to DDNS Service
 - ✓ Video Port prompt will be de-activated



- Click [Connect] to connect your IPV-100 or network camera.

☐ Connect All

Click [Connect All] to connect all IPV-100 or network cameras registered



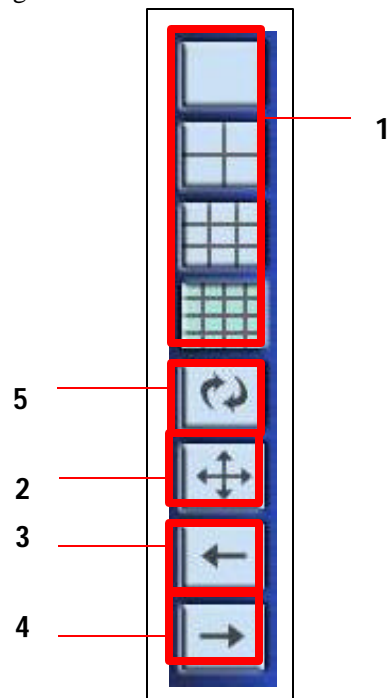
Monitoring

❑ Channel Selection



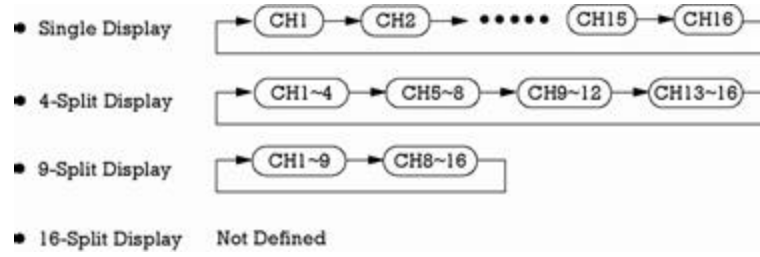
- ? Buttons highlighted in **violet**: Currently connected.
- ? Buttons highlighted in **green**: Currently selected to control the channel.
- ? Buttons highlighted in **blue**: Currently not connected and not selected.

❑ Monitoring Option



- ? Simultaneous Multi-Channel monitoring (1/4/9/16 CH).
- ? Expands images to full screen of your monitor without GUI. To return to images with GUI, press [esc] button or click the right button of your mouse.
- ? Moves to the previous channel.
- ? Moves to the next channel.
- ? Sequential Monitoring. Refer to the scan interval.

① Sequential Monitoring by Channel.



① Adjust the scan time on the general tab in setup.

Function Tab & Buttons

☐ General Tab



- [Setup] Button
Set up the program. All channels must be disconnected when choosing these settings.
- [Watch Net Player] Button
Playback the data recorded by IPV.
- [Sensor Alarm List] Button
- [OSD] Button
On/Off button for On Screen Display. OSD shows camera name, date & time, number of online users.
- [All Disconnect] Button
Disconnects all devices connected on the i-Pro.
- [All Connect] Button
Connects all devices which is registered on the Viewgate Network Recorder simultaneously.
- [Connect/Disconnect] Button
Connect or Disconnect the selected channel.

☐ Record Tab



- [Image Capture] Button
Saves an image in JPEG format.
- [Schedule Record] Button
Refer to the [Recording Setup] for more information.
- [All Record Stop] Button
Stops the recording function of all the channels.
- [All Record] Button
Records all the channels which are connected to i-Pro.

① The directory for the recording data can be set in the Setup window.
- [Record] Button
Records the selected channel.

① The directory for the recording data can be set in the Setup window.

❑ Control Tab

This tab is available for peripheral devices that have Pan/Tilt/Zoom, Preset, Digital In/Out functions .

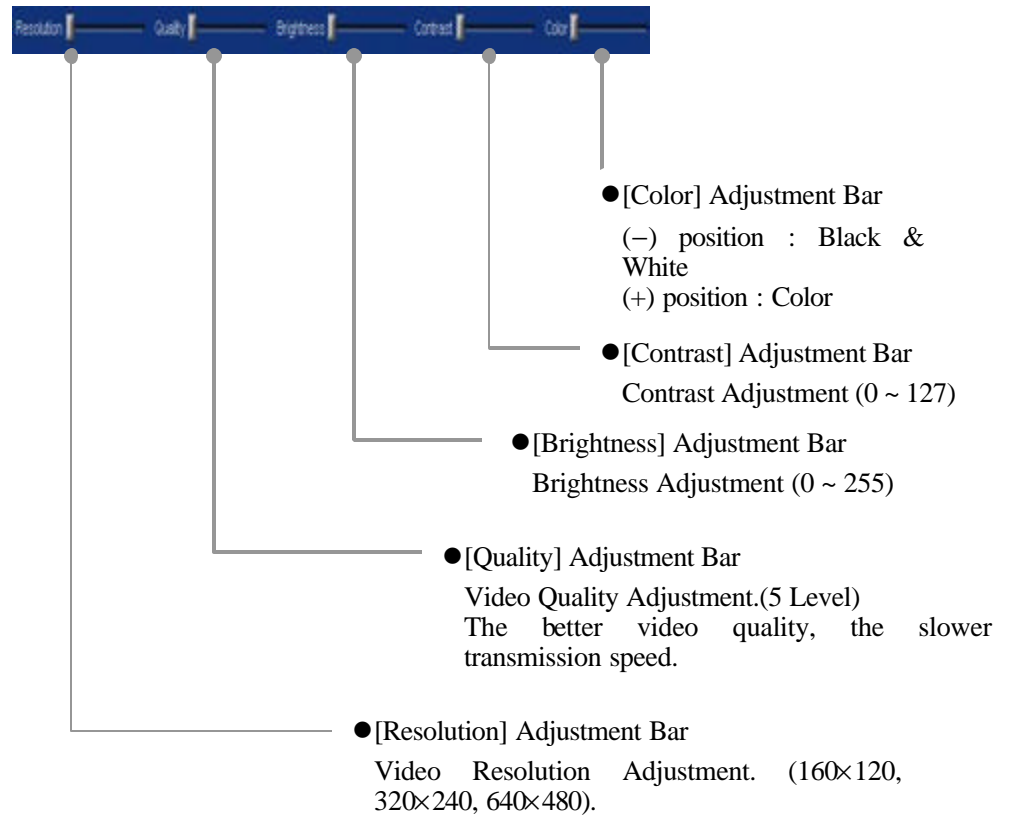


- [Save] Button
Saves the current Pan/Tilt positions and overwrites the previous information.
- [Delete] Button
Deletes all the previous information of the selected presets.
- [Move] Button
Sets the pan/tilt device to move to selected preset positions.
- [Preset] List
Shows preset list.



- [Digital Output] Button
Controls the 2 channel digital output.
- [Iris] Button
Adjust the Iris of camera.
- [Focus] Button
Adjust the Focus of camera.
- [Zoom] Button
Adjust the optical zoom of camera.

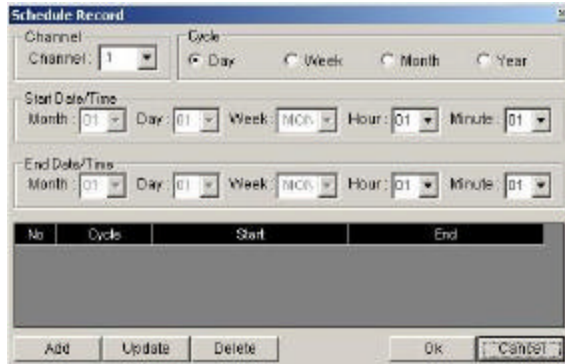
□ Image Tab



- ❑ Recording Setup Click [Schedule Recording] Button in the Recording Tab.



Sets up automatic schedule recording function of each channel with assigned date & time.



- Channel The channel to record.
- Cycle Enables a user to record images periodically by assigned year/month/week/day.
- Start Date/Time The date & time to start recording
- End Date/Time The date & time to end recording
- Add Adds a schedule recording list.
- Update Update the schedule recording lists.
- Delete Deletes a schedule recording list.

Example) The NO. 1 shows that IP View Network Recorder records the images of the selected channel from 17:01 to 18:01 every day.
The NO.2 shows that IP View Network Recorder records the images the images of the selected channel from 06:01 to 08:01 every Saturday.

No	Cycle	Start	End
1	DAY	17:01	18:01
2	WEEK	Sat:06:01	Sat:08:01

Pan/ Tilt Control

- Pan/Tilt Control The function is available for peripheral devices that have Pan/Tilt functions.



- Click center of [P/T Control] Button to control the Pan/Tilt device. If the peripheral device does not have Pan/Tilt function, the [P/T Control] Button does not work.

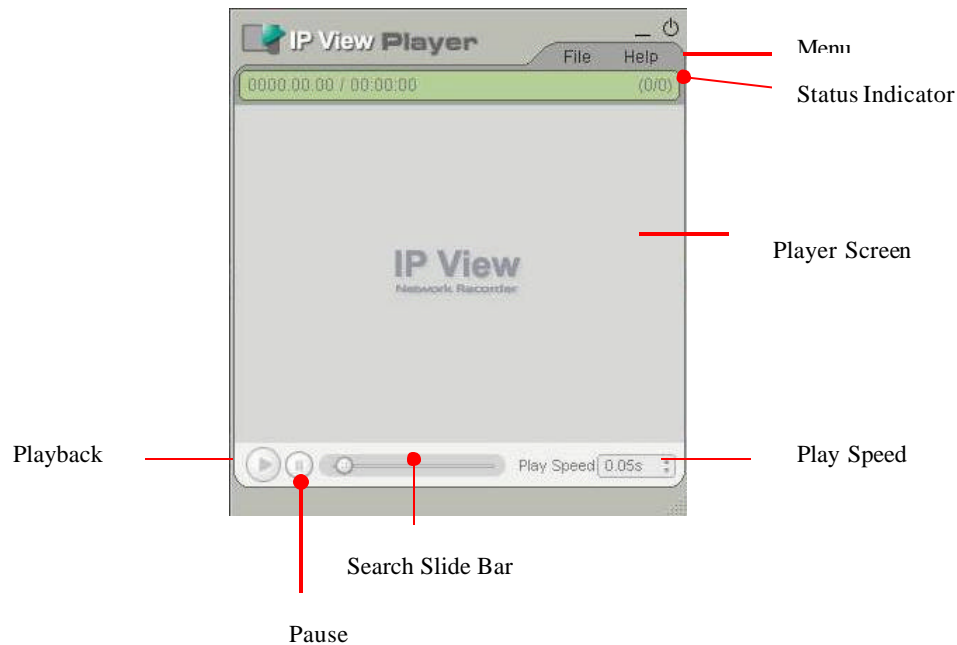
① A “P” should appear in upper right corner of viewing area when Pan/Tilt functions are enabled.



- The button of the Control Panel works.
- Press the arrows to make the Pan/Tilt device move. The device continues to move while you are pressing the arrows and stops moving when you stop pressing the arrows.

- ① Check the followings if Pan/Tilt Control does not turn on.
- Whether the peripheral device has Pan/Tilt function or not.
 - Whether the connection between IPV-100 and the peripheral device is correct or not.
 - Whether your authority is Administrator(Operator) or not.
 - Whether you selected a proper protocol in the Administration Tools of IPV-100.

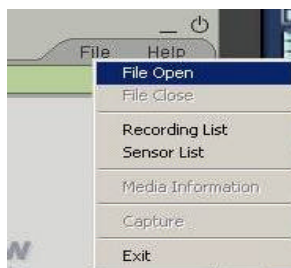
Viewgate Player Description



- Menu** Search and play the recorded data. [Help] menu indicates version of IP View Network Recorder Player.
- Status Indicator** Shows the information of the file currently being displayed such as the recorded date & time, the frame number / the total frame number.
Example) 50/100 : The IP View Network Recorder Player is displaying the 50th frame of the total 100 frames.
- Playback Button** Plays the recorded data. If clicked on during playback, the playback stops.
- Pause Button** Pauses playback. Click it once more to continue with playback.
- Search Slide Bar** Shows the frame number of the image currently being displayed. Move the button on the Slide Bar to search through the file.
- Play Speed** Shows the frame rate speed of the playback. Click the arrow mark to adjust its playback speed. (0.01sec ~ 1sec)

Menu Description

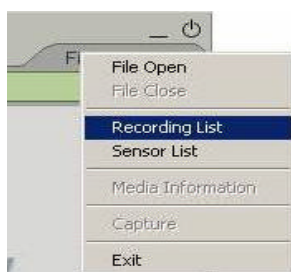
❑ Playback



- [Select [File Open] in the [File] menu.
- Select the file to be displayed.

① Location of recording file .
The folder assigned in the RECORD\Channel-NO. \Camera_Name \Recording Date
Example) . \Record\Channel-1\CAM\20040621

❑ Recoding List



- Select [Recording List] in the [File] menu.



- [Channel] : Select the channel to search.
- [Camera Name] : Select the camera name to search
- Select Year/Month/Date and click [Search]
- Click [Delete] button to remove a file

